

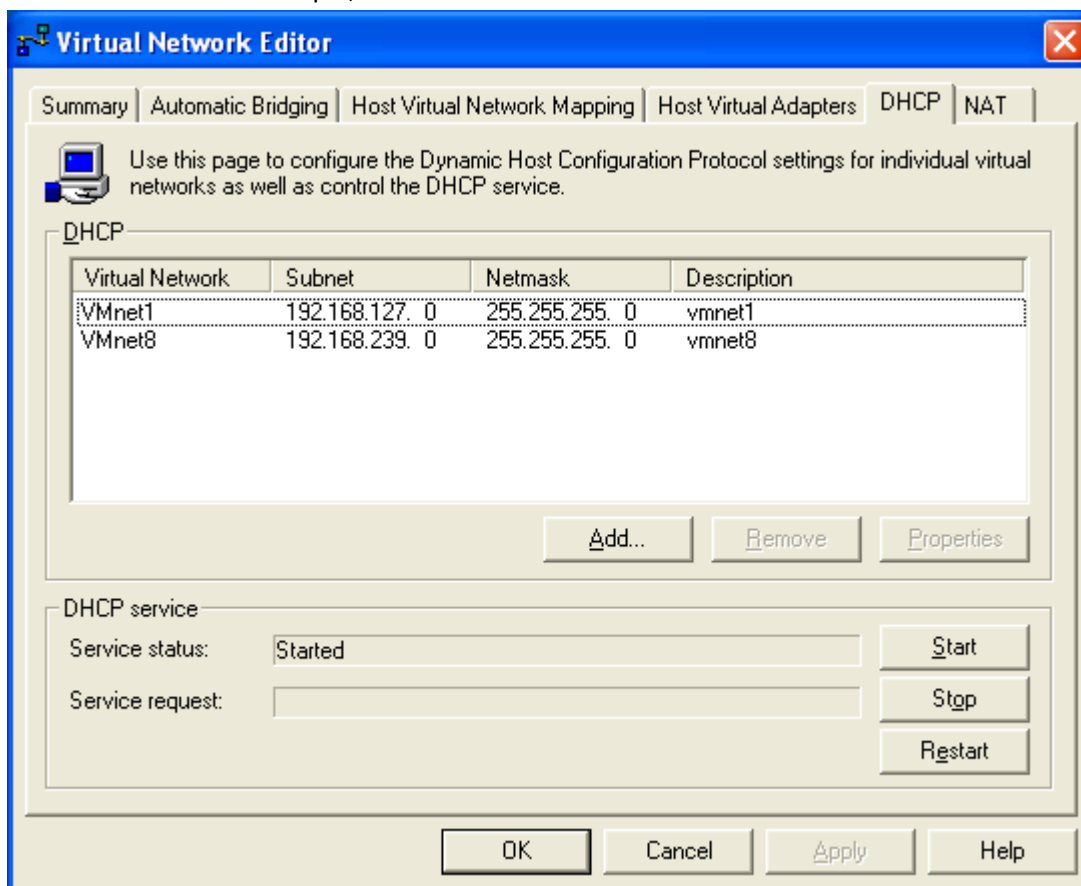
## Boot Windows2003 from iSCSI Cake

Software requirement:

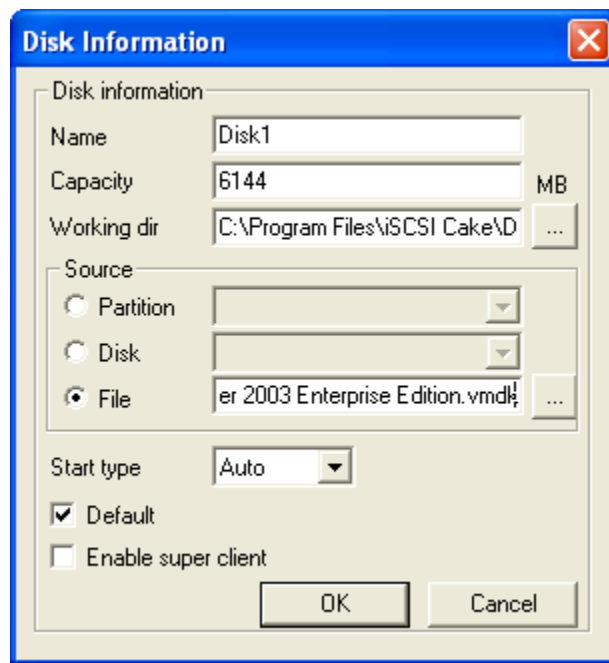
1. iSCSI Cake1.7.26 or later version
2. [winboot/i](#)
3. VMWare workstation or server
4. Windows 2003 installation disc
5. Microsoft iSCSI initiator boot version (<http://download.microsoft.com/download/f/1/3/f136d796-5342-4479-80a7-0e6fae3875ee/Initiator-2.07-boot-build3640-x86fre.exe>)

Steps:

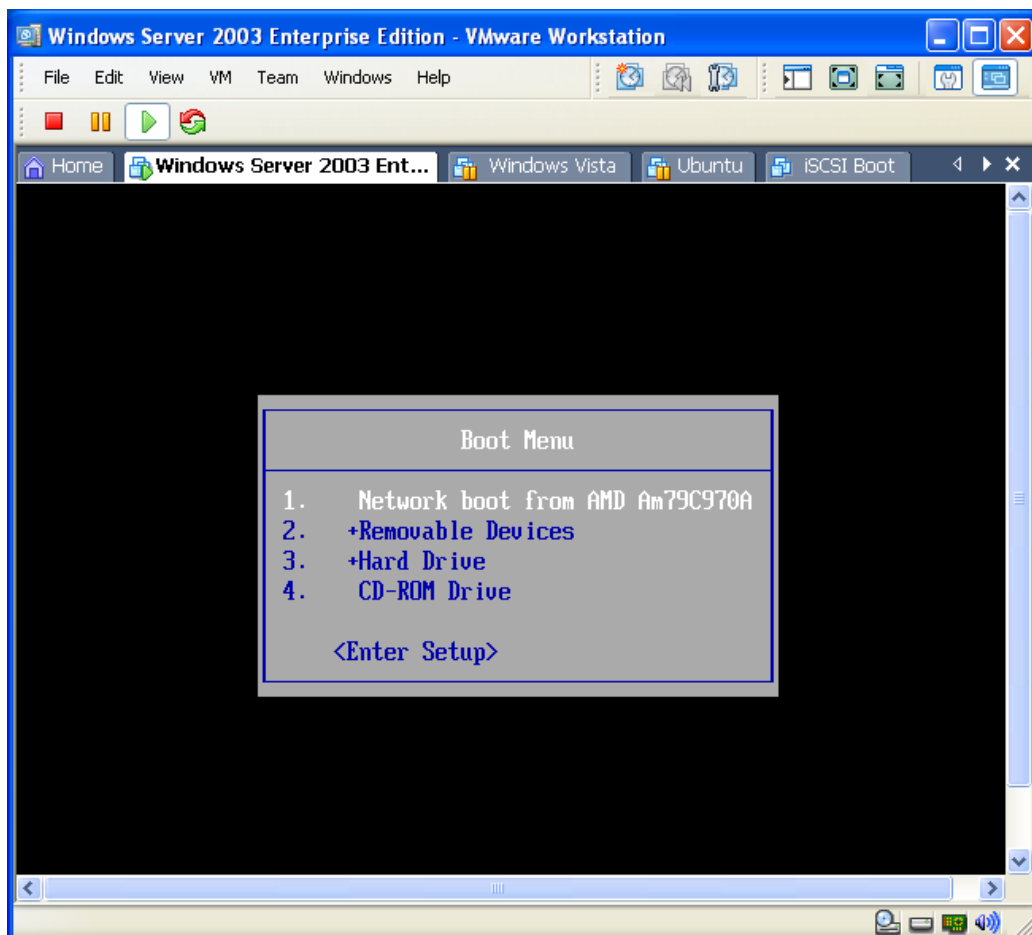
1. Install a clean Windows 2003 in VMWare or using existing Windows 2003 VMWare. In this example, VMware station is running on XP machine, NIC is hostonly and gets IP from DHCP. VMWare station comes with a DHCP server but does not start by default. Start it manually and check if 2003 can get valid IP address. For example, 192.168.127.128.



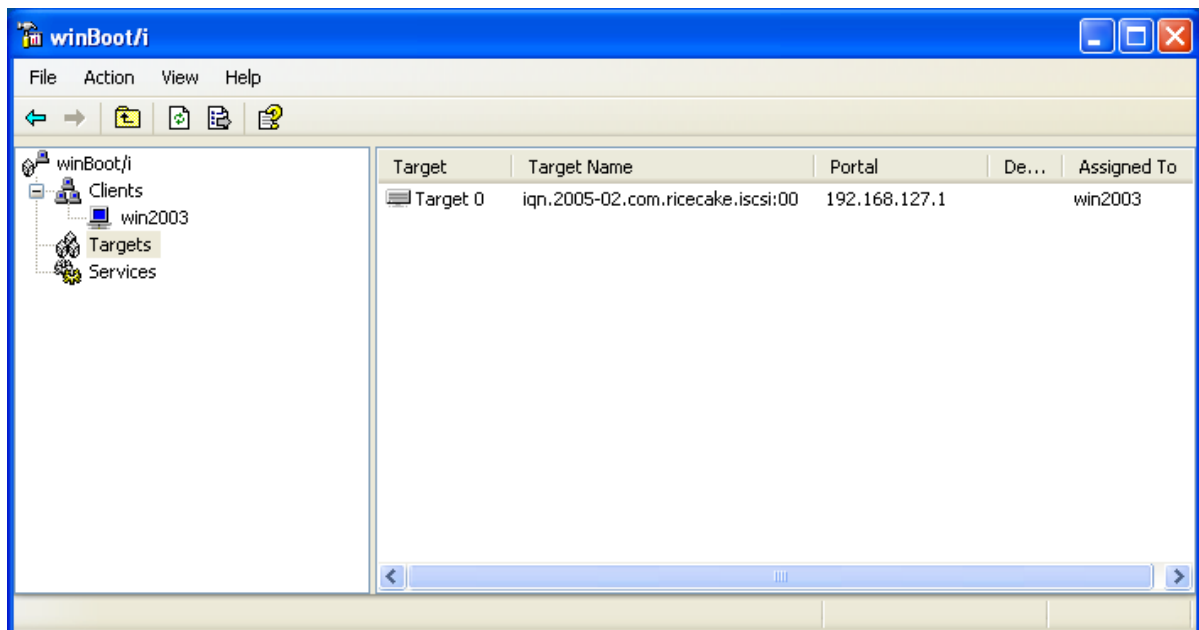
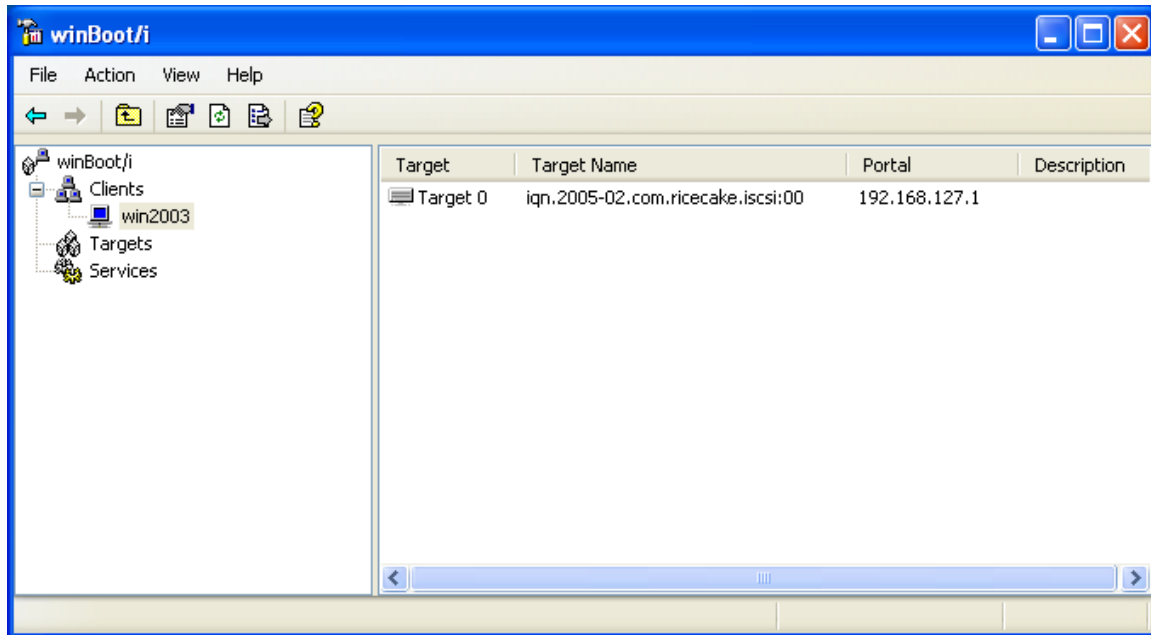
2. Install [iSCSI Boot version](#) in Windows 2003, all default settings. Run from cmd : `iscsibcg /verify /fix`
3. Shutdown 2003 because we need its VMDK file, otherwise the VMDK file is still locked by VMWare and cannot be used by iSCSI Cake.
4. Add a disk in iSCSI Cake using the VMDK file just created.



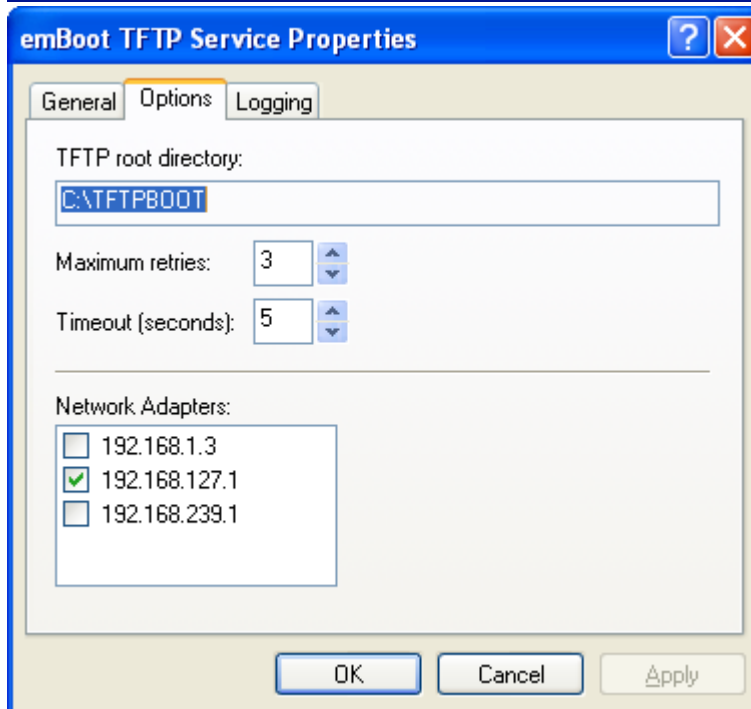
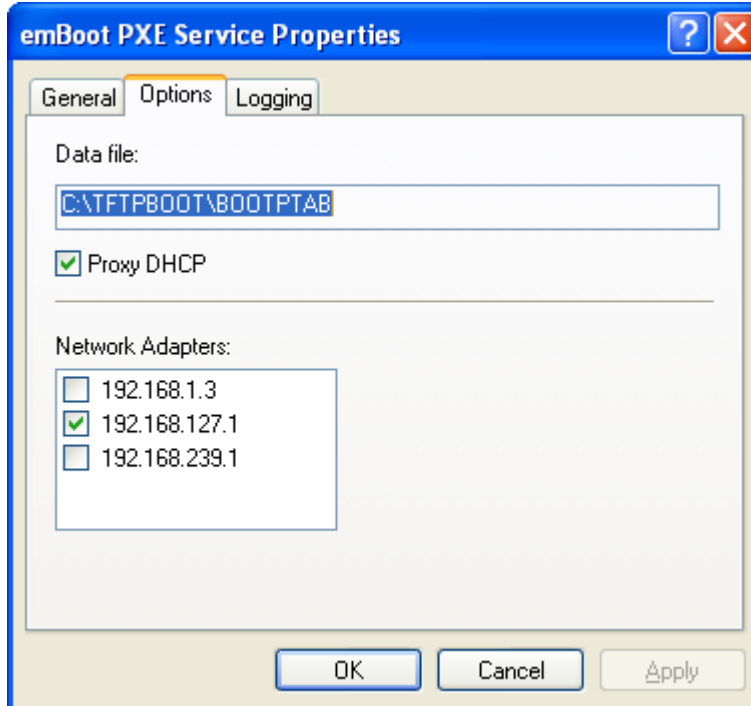
5. Build a new VMWare machine, typical Windows 2003 setting, boot from network. Start the new machine. It cannot connect with winboot so far, but we can find its MAC address on screen and write it down for later use.



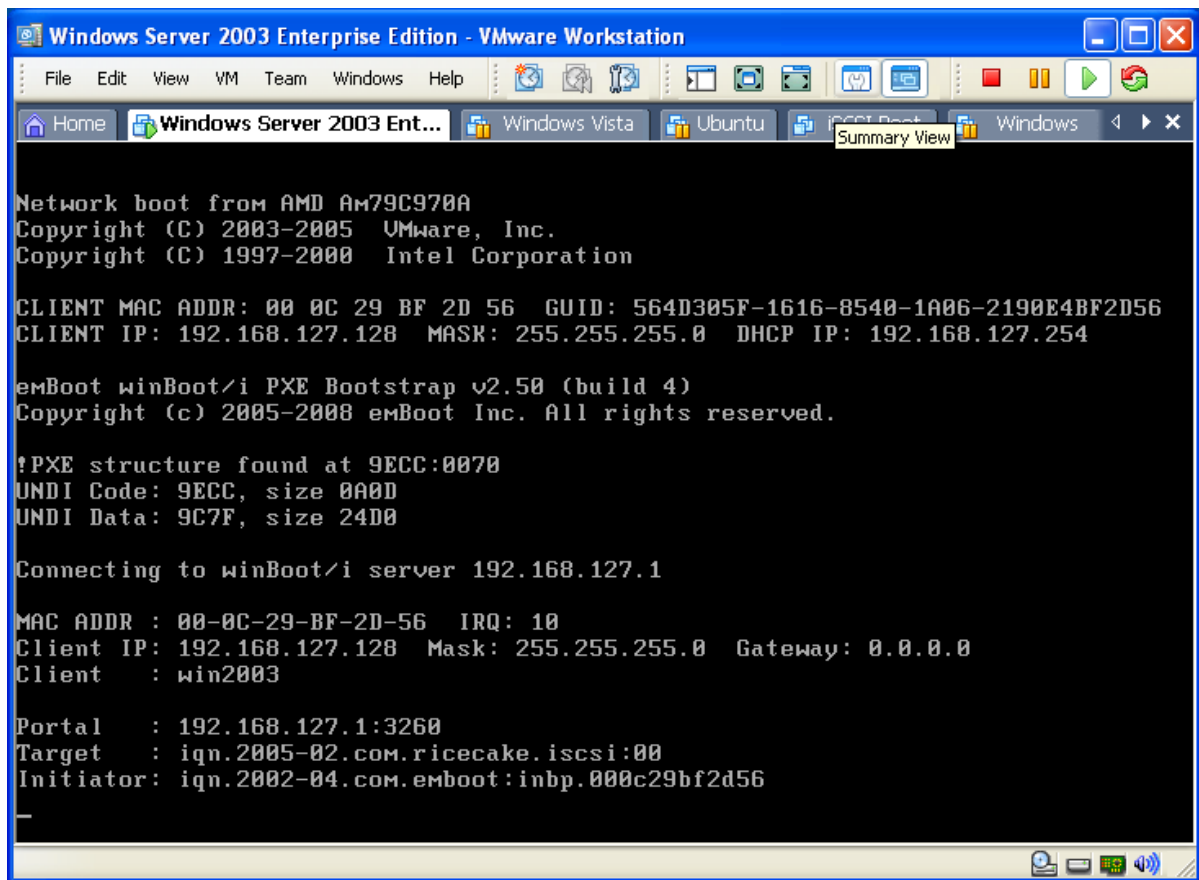
6. Install winboot/i in host XP, add a client with the MAC address of the new 2003 virtual machine. Add a target with the ip address of iSCSI Cake server. Assign the target to the client. Check winboot help document for any problem.



7. In winboot/i, combine PXE service and TFTP service to VMWare network adapter.



8. Start the new 2003 virtual machine and here we go!



```
Windows Server 2003 Enterprise Edition - VMware Workstation
File Edit View VM Team Windows Help
Home Windows Server 2003 Ent... Windows Vista Ubuntu iSCSI Boot Summary View Windows
Network boot from AMD Am79C970A
Copyright (C) 2003-2005 VMware, Inc.
Copyright (C) 1997-2000 Intel Corporation

CLIENT MAC ADDR: 00 0C 29 BF 2D 56 GUID: 564D305F-1616-8540-1A06-2190E4BF2D56
CLIENT IP: 192.168.127.128 MASK: 255.255.255.0 DHCP IP: 192.168.127.254

emBoot winBoot/i PXE Bootstrap v2.50 (build 4)
Copyright (c) 2005-2008 emBoot Inc. All rights reserved.

!PXE structure found at 9ECC:0070
UNDI Code: 9ECC, size 0A00
UNDI Data: 9C7F, size 24D0

Connecting to winBoot/i server 192.168.127.1

MAC ADDR : 00-0C-29-BF-2D-56 IRQ: 10
Client IP: 192.168.127.128 Mask: 255.255.255.0 Gateway: 0.0.0.0
Client : win2003

Portal : 192.168.127.1:3260
Target : iqn.2005-02.com.ricecake.iscsi:00
Initiator: iqn.2002-04.com.emboot:inbp.000c29bf2d56
```